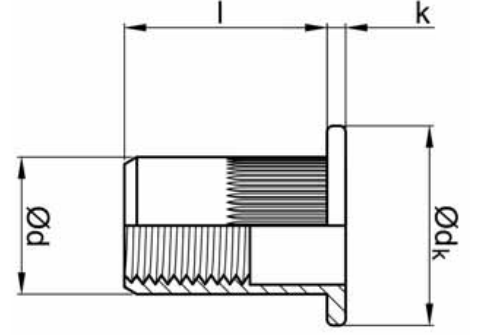

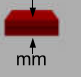
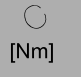


SOMUNLU PERÇİN ÇELİK FLANŞ KAFA

RIVET NUTS STEEL FLANGE HEAD



Ø d3			l [+1/-2] [mm]		Ø dk [+/-0,5] [mm]	k [mm]	d [+0/0,12] [mm]		ÜRÜN NO PART NO
M3	Ø 5,0	$\begin{matrix} \updownarrow [N] : 4.900 \\ \rightleftarrows [N] : 990 \end{matrix}$	10,0	0,5 - 1,5	8,0	≤ 0,8	4,9	3,0	02.11213.M031000515
M4	Ø 6,0	$\begin{matrix} \updownarrow [N] : 7.840 \\ \rightleftarrows [N] : 1.660 \end{matrix}$	10,5	0,5 - 2,0	9,0	≤ 0,8	5,9	4,5	02.11213.M041050520
			12,0	2,0 - 3,5					02.11213.M041202035
M5	Ø 7,0	$\begin{matrix} \updownarrow [N] : 11.070 \\ \rightleftarrows [N] : 2.760 \end{matrix}$	13,0	0,5 - 2,5	10,0	≤ 1,0	6,9	6,0	02.11213.M051300525
			16,5	2,5 - 5,0					02.11213.M051652550
M6	Ø 9,0	$\begin{matrix} \updownarrow [N] : 17.640 \\ \rightleftarrows [N] : 3.430 \end{matrix}$	15,5	0,5 - 3,0	12,3	≤ 1,3	8,9	20,0	02.11213.M061550530
			19,5	3,0 - 5,5					02.11213.M061953055
M8	Ø 11,1	$\begin{matrix} \updownarrow [N] : 27.440 \\ \rightleftarrows [N] : 4.440 \end{matrix}$	18,5	1,0 - 3,5	14,5	≤ 1,5	10,9	29,0	02.11213.M081851035
			21,0	3,5 - 6,0					02.11213.M082103560
M10	Ø 13,0	$\begin{matrix} \updownarrow [N] : 28.420 \\ \rightleftarrows [N] : 4.900 \end{matrix}$	21,5	1,0 - 4,0	17,0	≤ 1,7	12,9	32,0	02.11213.M102141040
			24,0	4,0 - 6,5					02.11213.M102424065
	Ø 12,0	$\begin{matrix} \updownarrow [N] : 28.420 \\ \rightleftarrows [N] : 4.900 \end{matrix}$	17,0	1,0 - 3,5	16,0	≤ 1,7	11,9	32,0	02.11213.M121941040
M12	Ø 16,0	$\begin{matrix} \updownarrow [N] : 48.020 \\ \rightleftarrows [N] : 6.860 \end{matrix}$	25,0	1,0 - 4,0	22,0	≤ 2,0	15,9	43,7	02.11213.M122701040

