



G7 Hinge

Bi-stable

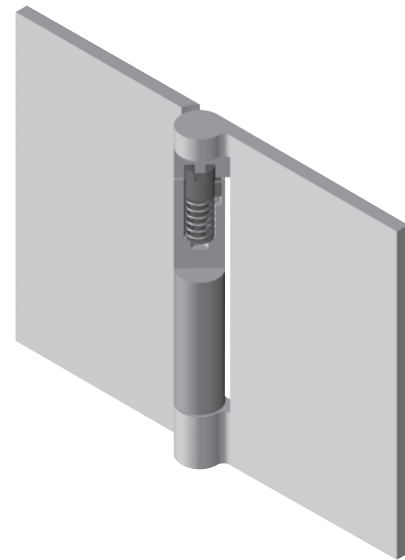
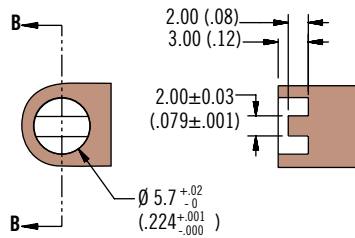
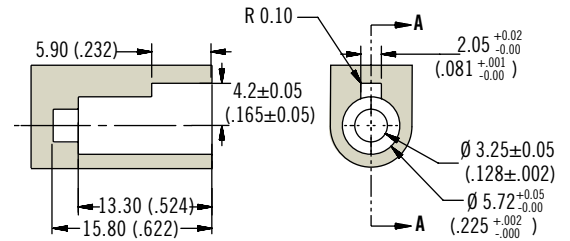
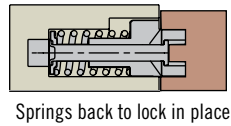
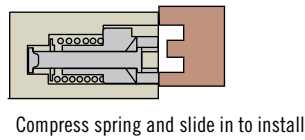
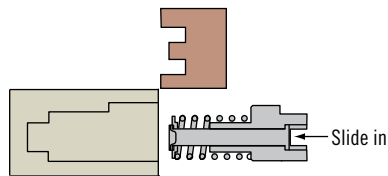
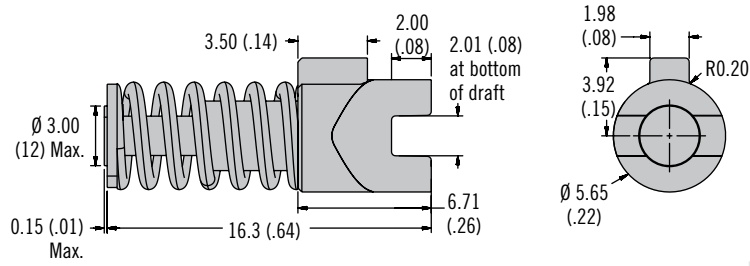
- Automatically drives to one of two preferred positions
- Invisible when installed

Material and Finish

Acetal black, steel, zinc plated

Performance Details

Cycle performance: 20,000 cycles within $\pm 20\%$ of normal torque specification



Part Number

See table

| Part Number | Max. Torque N·m (in·lbf) |
|-------------|--------------------------|
| G7-6A-3P-1 | 0.035 (.3) |



www.southco.com/G7

Dimensions in millimeters (inch) unless otherwise stated