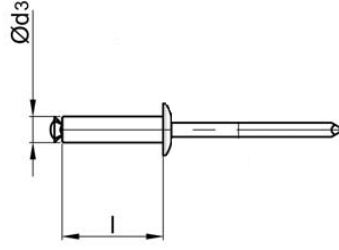
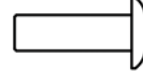


ÖRÜMCEK PERÇİN AL-ST BOMBE KAFA

PEEL RIVET AL-ST DOME HEAD

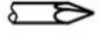


Alüminyum [AlMg3,5]
Parlatılmış


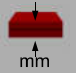


Aluminium [AlMg3,5]
Polished

Çelik
Çinko Kaplama



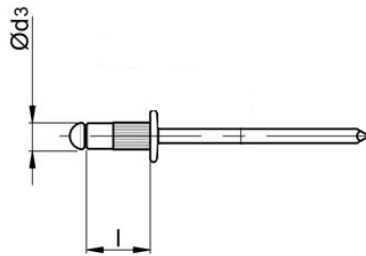
Steel
Zinc Plated

Ø d3	 [mm]		l [+1/-2] [mm]	 [mm]	ÜRÜN NO PART NO
* 3,2 [+0.15/-0.10]	Ø 3,4 [3,5 max]	⇕ [N] : 750 ⇔ [N] : 820	8,0	0,5 - 1,0	01.041211.32080
			10,0	1,0 - 3,0	01.041211.32100
			12,0	3,0 - 5,0	01.041211.32120
			16,0	7,0 - 9,0	01.041211.32160
			18,0	9,0 - 11,0	01.041211.32180
4,0 [+0.15]	Ø 4,2 [4,3 max]	⇕ [N] : 1.140 ⇔ [N] : 1.280	10,0	1,5 - 5,0	01.041211.40100
			12,0	4,0 - 6,5	01.041211.40120
			14,0	6,0 - 9,0	01.041211.40140
			16,0	8,0 - 11,0	01.041211.40160
			18,0	10,0 - 13,0	01.041211.40180
4,8 [+0.15]	Ø 5,1 [5,3 max]	⇕ [N] : 2.450 ⇔ [N] : 2.100	20,0	12,0 - 15,0	01.041211.40200
			10,0	1,5 - 4,0	01.041211.48100
			12,0	2,0 - 6,0	01.041211.48120
			14,0	4,0 - 8,0	01.041211.48140
			16,0	6,0 - 9,5	01.041211.48160
			18,0	8,0 - 12,0	01.041211.48180
			20,0	10,0 - 14,0	01.041211.48200
			22,0	12,0 - 16,0	01.041211.48220
			25,0	16,0 - 19,0	01.041211.48225
			30,0	19,0 - 24,0	01.041211.48300
35,0	24,0 - 29,0	01.041211.48350			
40,0	29,0 - 34,0	01.041211.48400			

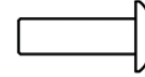


ELEKTROFIX PERÇİN AL-ST BOMBE KAFA

ELECTROFIX RIVET AL-ST DOME HEAD



Alüminyum [AlMg3,5]
Parlatılmış


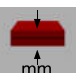


Aluminium [AlMg3,5]
Polished

Çelik
Çinko Kaplama



Steel
Zinc Plated

Ø d3	 [mm]		l [+1/-2] [mm]	 [mm]	ÜRÜN NO PART NO
3,2 [+0.05/-0.13]	Ø 3,3 [3,5 max]	⇕ [N] : ⇔ [N] :	9,5	1,2 - 6,4	01.091211.32095
4,0 [+0.05/-0.13]	Ø 4,1 [4,3 max]	⇕ [N] : ⇔ [N] :	9,5	1,2 - 6,4	01.091211.40095

