



AC Actuators Cable Assembly

- Connecting actuators with rotary latches
- Standard offering of cable assemblies

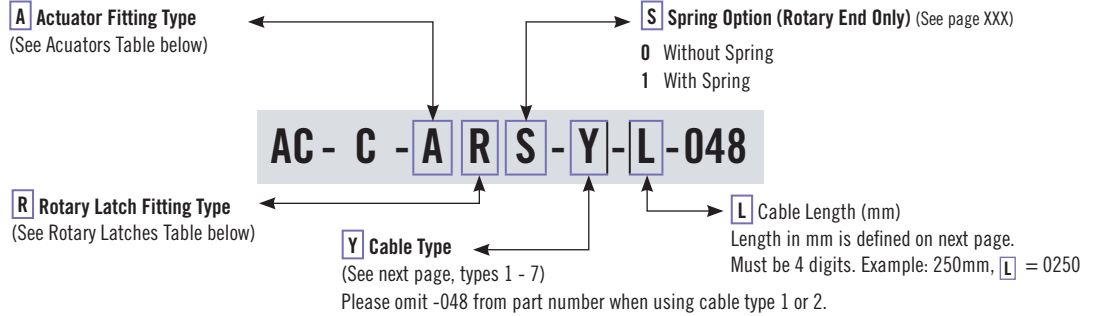
Material and Finish

Cable: Stainless Steel

Liner: Acetal

Jacket: Polypropylene

Cable Assembly Part Number Selection



Fitting Type													
Barrel Fitting		L Fitting		Z Fitting		Eyelet Fitting		Ball Fitting		Threaded Fitting		Bare Cable	
A & R	Material	A & R	Material	A & R	Material	A & R	Material	A & R	Material	A & R	Thread	A & R	Material
A	Die-Cast	B	Plated Steel	C	Plated Steel	D	Stainless Steel	H	Stainless Steel	E	M4	0	Stainless Steel
J	Stainless Steel	K	Stainless Steel							F	8-32		

Actuators			
Single-Point			
	AC-60 Page XXX		
	AC-70 Page XXX		Barrel Fitting
AC-80 Page XXX			
AC-75* Page XXX			
			L Fitting
AC-M1 Page XXX			
Multi-Point			
	AC-10 Page XXX		
	AC-30 Page XXX		L Fitting
AC-40 Page XXX			
R3-20 Page XXX			
			Eyelet Fitting
64-40 Page XXX			Bare Cable
E5 Page XXX			Bare Cable

*AC-75 must use Type 7 Cable

Rotary Latches			
Non-FMYSS Compliant			
	R4-10 Page XXX		
R4-20 Page XXX		L Fitting	
FMYSS Compliant			
	R4-30 Page XXX		
R4-50 Page XXX			
Electronic Access			
	R4-EM Page XXX		
	R4-EM Page XXX		Ball Fitting
EM-05 Page XXX			





Cable Assembly		Y Cable Type	L Cable Length
Y = 1	<p>Type 1 - Bare Cable (P/N AC-CAB0-1-L as shown)</p> <p>±1.5 (up to 610) ±2.3 (611 to 1220) ±3.2 (1221 to 2540) ±4 (over 2540)</p>	Y = 2	<p>Type 2 - Coated Cable (P/N AC-CAB0-2-L as shown)</p> <p>±1.5 (up to 610) ±2.3 (611 to 1220) ±3.2 (1221 to 2540) ±4 (over 2540)</p>
Y = 3	<p>Type 3 - Jacketed Cable with End Coupling Retainers (Shown with Spring Option) (P/N AC-CBB1-3-L-048 as shown)</p> <p>K +6/-0 (Up to 1220) +10/-0 (1221 to 2540) +14/-0 (Over 2540)</p> <p>L (mm) REF.</p>		
Y = 4	<p>Type 4 - Jacketed Cable with Snap Ring and Threaded Retainers (P/N AC-COH0-4-L-048 as shown)</p> <p>L (mm) REF.</p> <p>K +6/-0 (Up to 1220) +10/-0 (1221 to 2540) +14/-0 (Over 2540)</p> <p>1.6 (.06) Max Cable Protrusion</p> <p>1/4 - 20 Threads</p>		
Y = 5	<p>Type 5 - Jacketed Cable with Snap Ring and End Coupling Retainers (P/N AC-CAH0-5-L-048 as shown)</p> <p>L (mm) REF.</p> <p>K +6/-0 (Up to 1220) +10/-0 (1221 to 2540) +14/-0 (Over 2540)</p> <p>1.6 (.06) Max Cable Protrusion</p>		
Y = 6	<p>Type 6 - Jacketed Cable with Snub End Coupling and Threaded Retainers (P/N AC-CAC1-6-L-048 as shown)</p> <p>K +6/-0 (Up to 1220) +10/-0 (1221 to 2540) +14/-0 (Over 2540)</p> <p>L (mm) REF.</p> <p>*AC-75 can only use Snub End Coupling.</p>		
Y = 7	<p>Type 7 - Jacketed Cable with Snub End Coupling and End Coupling Retainers (P/N AC-CAB1-7-L-048 as shown)</p> <p>K +6/-0 (Up to 1220) +10/-0 (1221 to 2540) +14/-0 (Over 2540)</p> <p>L (mm) REF.</p> <p>*AC-75 can only use Snub End Coupling.</p>		

- For full product specifications on cable assemblies, refer to trade drawing J-AC-C.

Notes

Minimum cable length = 115mm (4.5)

The distance between where the cable mounting bracket engages the cable assembly and the point of engagement with the rotary latch is available in different lengths. Please call Southco for assistance.



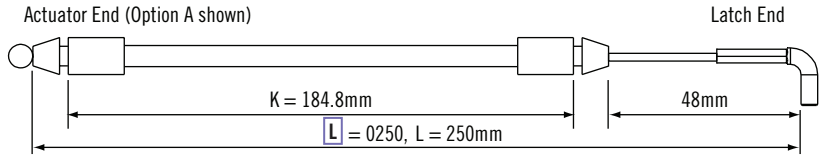
AC Actuators

Cable Accessories

S Spring Option (Rotary Side Only)

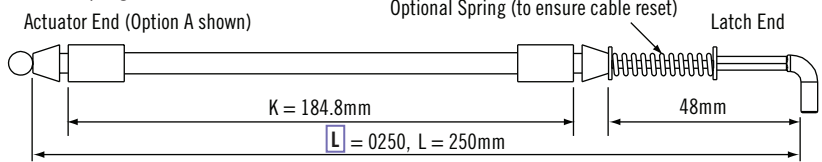
- 0 Without Spring
- 1 With Spring

0 Without Spring



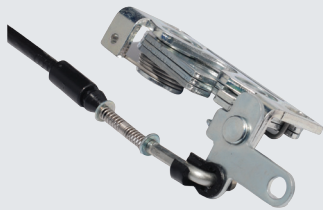
Cable Part Number Example: AC-CAB0-3-0250-048

1 With Spring



Cable Part Number Example: AC-CAB1-3-0250-048

- For use with $\varnothing 4$ (.157) rod or Southco cable assembly



Material and Finish

Clip: Acetal

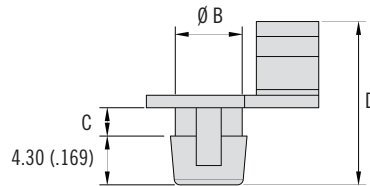
Bracket: Steel

Part Number

Retainer clip see table

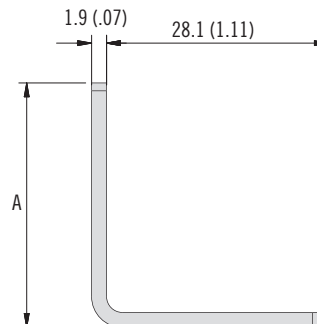
Cable assembly contact Southco

Retainer Clip



Latch Series	Part Number	Material	B	C	D	Panel Prep	
						Hole Diameter	Panel Thickness
R4-10	R4-0-43922	Acetal, Black	5.9 (.23)	2.5 (.10)	14.4 (.57)	6.3 (.25)	2.0 (.08)
R4-30							
R4-20	R4-0-43922-1	Acetal, White	6.3 (.25)	4.5 (.18)	16.4 (.65)	6.65 (.26)	4.0 (.16)
R4-50							

Cable Mounting Bracket



Part Number	A
R4-0-50253-1	28 (1.10)
R4-0-50253-2	31 (1.22)

